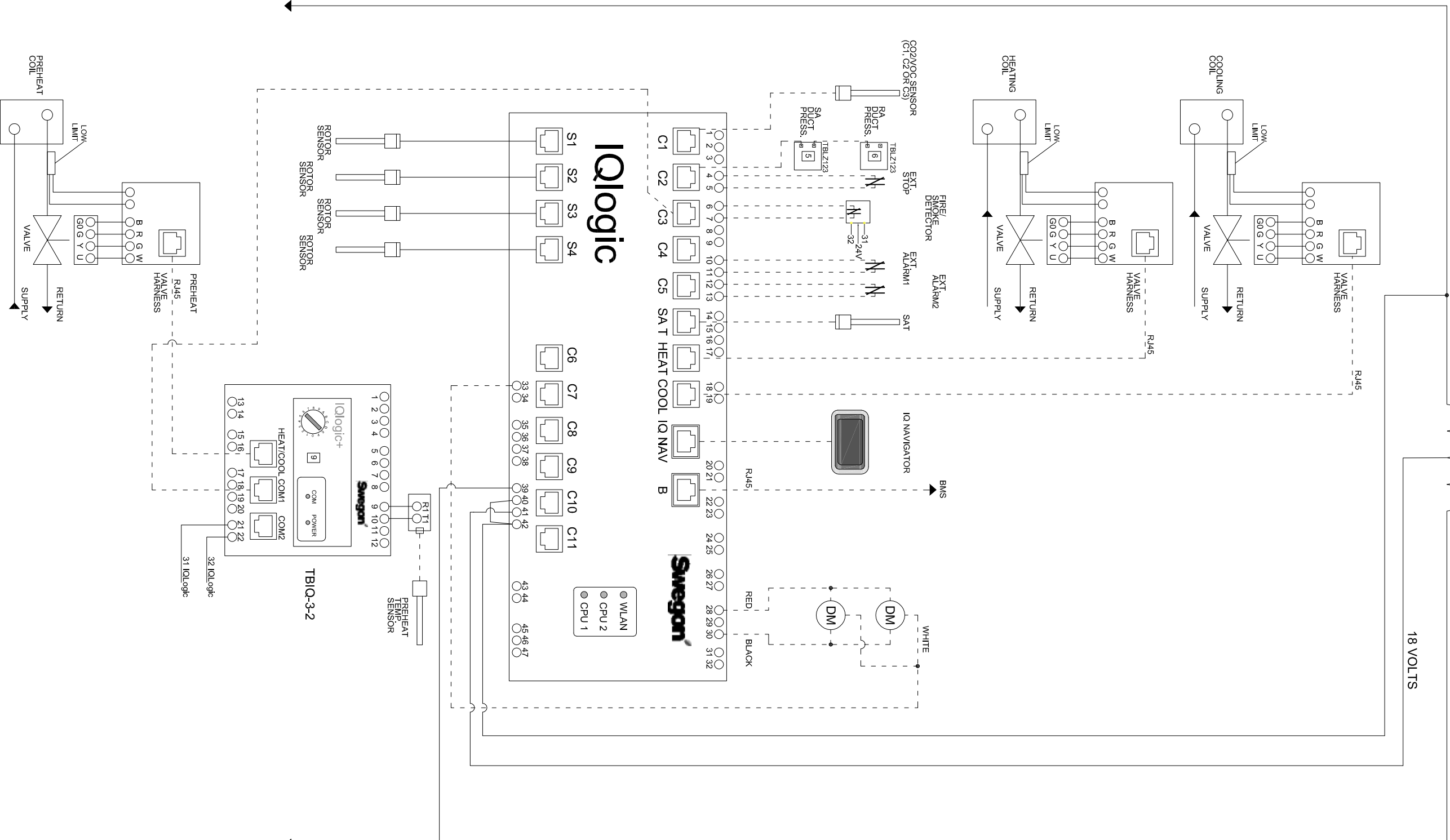


220/460/600 VOLTS
60 HZ

FUSE

FUSE

24 VOLTS
18 VOLTS



NOTES:
 - - - FIELD WIRING
 (DM) DAMPER MOTOR



HOT WATER PREHEAT + HOT
 WATER POST HEAT + CHILLED
 WATER CONTROL WIRING

DRAWN BY	DRAWN DATE	NOV 2019	SUB
ED. BY	ED. DATE		SHEET
DRAWING NO.		DWG 03	EDITION